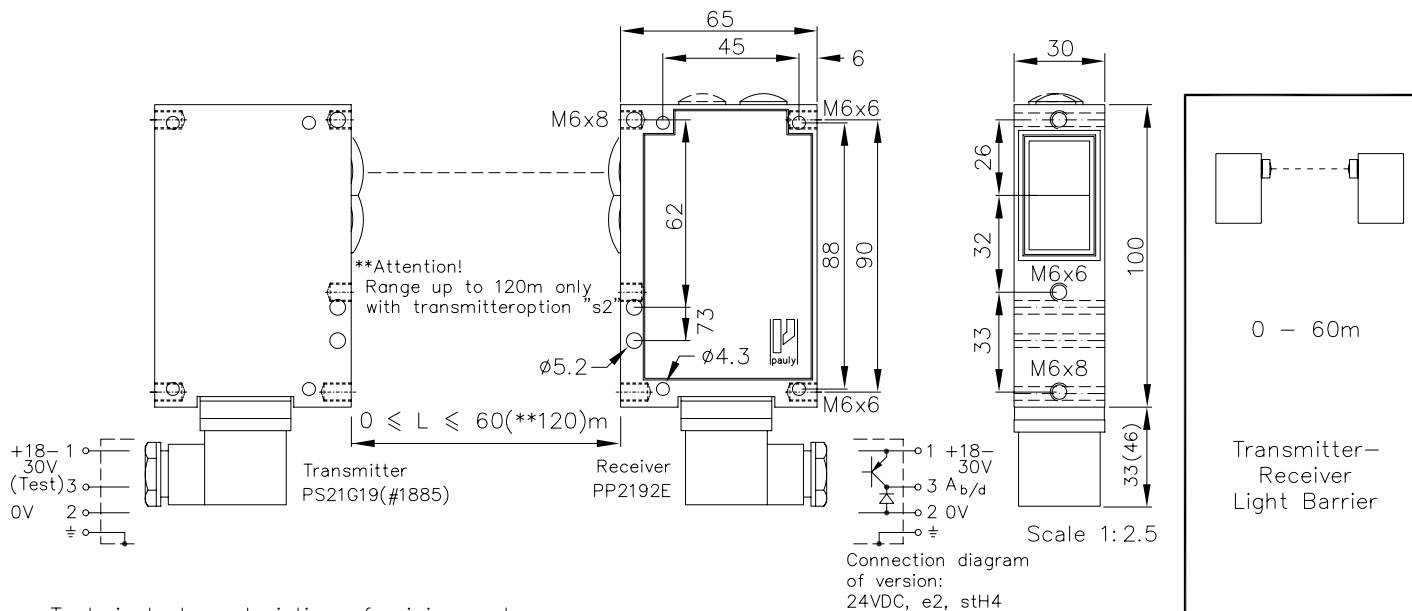


Transmitter-Receiver Light Barrier Type PP 2192



Technical characteristics of minimum type:

Housing	Al-Cast	Features:	
Weight	2xapprox. 350g	Connection	4 pin Plug stLU4 4+1 pin Plug stA5 6+1 pin Plug stA7 6+1 pin Plug stH7 3+1 wire No.-Cable K4 2x3 wire No.-Cable 2K3
Protection mode	IP65	Supply	230V, 115V, 42..48V, 24VAC 24..230VUC
Connection	2x3+1 pin Plug stH4	Output	npn 60mA s.-c.-prot., e3 Optocoupler 60V/50mA,e1 Relay 240VAC/5A, 120W/1200VA, 1xU also: 2xe2/2xe3 or antival. e4/e5
Supply	Receiver: 24VDC/20mA without load Transmitter: 24VDC/50mA	Time delay	0-10s, switching-on-off-delay, separately adjustable, z10
Output	pnp 60mA s.c.-prot.,e2	Level indicator	DIANA, i
Signal mode	bright/dark, selectable	Heat protected transducer system, pl	
Transmitter light	LED 880nm (invisible)	If using cooling water flange, then milled wall, y	
Steady light resistance	>80kLx	Testable by interrupting the transmitter, t	
Light beam diameter	approx. 2800mm/50m	PV2192 (#1726): Pollution warning output	
Access time	~5ms on; <1ms off	PU2192 (#1727): 'intelligent' Pollution warning output	
Switching rate	>100/s, Relay: 10/s		
Switch indicator	LED green (Receiver)		
Working indicator	LED red (Transmitter)		
Ambient temperatur	-30...+80°C (100°C*)		

PP 2192

Order no.:

1665

Accessories:

- Diaphragms
- Optical filters
- Adjustment flange JF19H(1)
- Elbow tube adjustment JR19(2&3)
- Cooling water flange KW19
- Anti heat shield & anti dust tube (K)JT19

Hints:

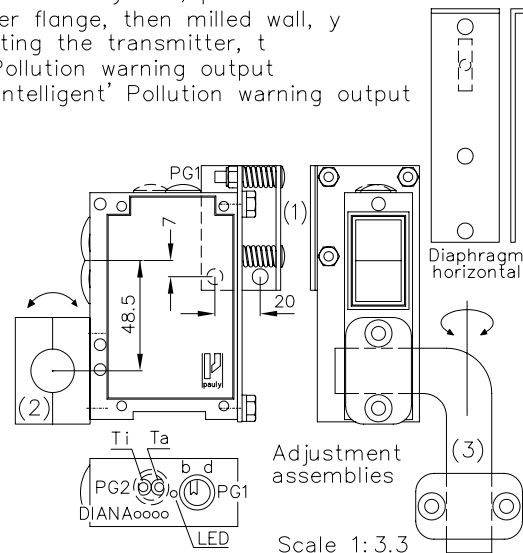
Selection of bright/dark switching mode is standard. The selection switch can be reached after removing the blanking screw designated 'PG1'. Bright switching means that the output is operated when the transmitter light is received by the receiver. The switch indicator lights when the output is operated.

The on- (Ti) and off- (Ta) delay are optional. Turning the controls behind 'PG2' clockwise increases delay times. The delay time range is between approx. 0 and 10 secs. Other delays are available on request.

The level indicator 'DIANA' (Digital ANAlog indicator) is optional, too. DIANA shows the level approx. 20 to 25 times above the threshold signal. For proper operation of the light barrier it is not necessary to have all DIANA LEDs on!

Connecting the optional available test input to 24V will switch on, nc or 0V will interrupt the transmitter.

E_ 166x 1.TXT



1665 DE (09.01.03 gs)
 E_ 1665 1 17.02.05 mj
 (24.06.96 tb)
 (13.11.98 tb)