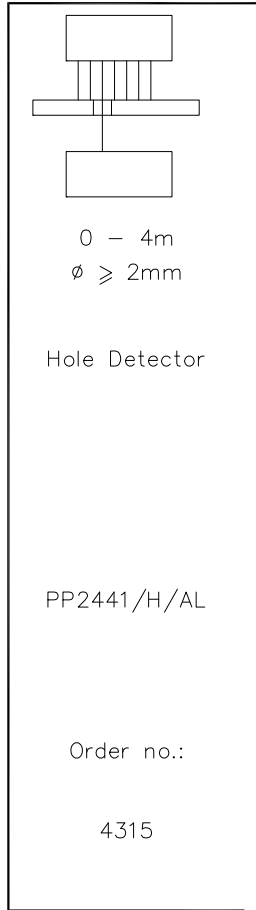
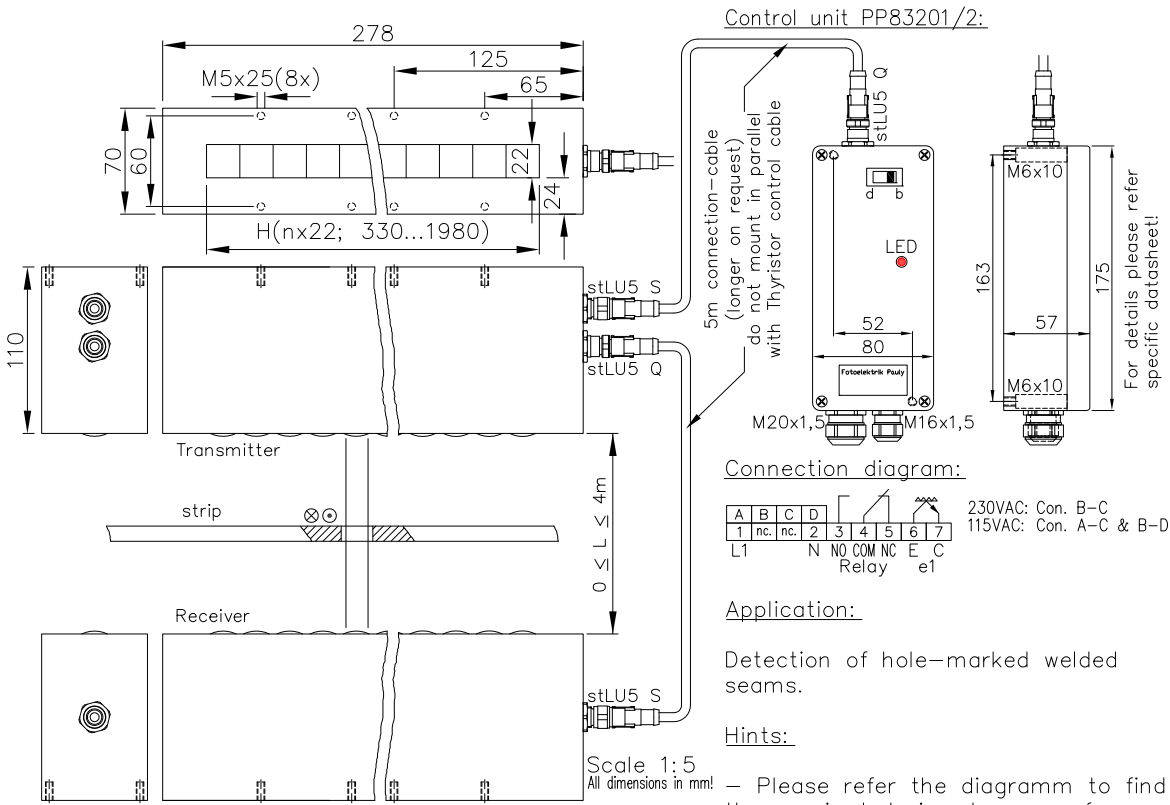


## Hole Detector Type PP2441/H/AL for Detection of Welded Seams



### Technical Characteristics:

Housing Aluminium, anodized  
 Weight approx. 2x12kg/m  
 Protection Mode IP65  
 Connection\* Terminal block  
 Supply\* 230/115VAC/10VA ±10%  
 Output\* Relay 250VAC/8A, 150W/1500VA, 1xCh, R  
 Optocoupler 60V/50mA, e1  
 Switching Mode\* bright-/darkswitching, selectable  
 Transmitter Light 850 ... 880nm, invisible  
 Steady Light Resistance >80kLx  
 Interference Suppressor forced synchronisation  
 Access Time Standard: ≥ 12ms/switch Transition  
 Switching Frequency ~40/s  
 Switch Indicator\* LED red  
 Switch pulse prolongation\* 0...3s switch-on-off-delay, z3  
 Ambient Temperature -25...+60°C  
 \*: control unit, e.g. PP83201/2

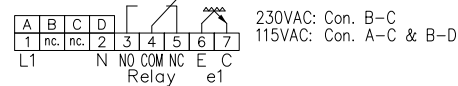
### Special Design:

Access Time q: ≥ 1,5ms/switch Transition  
 qq: ≥ 0,5ms/switch Transition  
 Supply Voltage\* 24VDC, 42...48VAC  
 Output\* pnp, e2; npn, e3; short-circuit proof  
 Heat-protected optical system, pl

### Accessories:

Control Unit, e.g. PP83201/2

### Connection diagram:



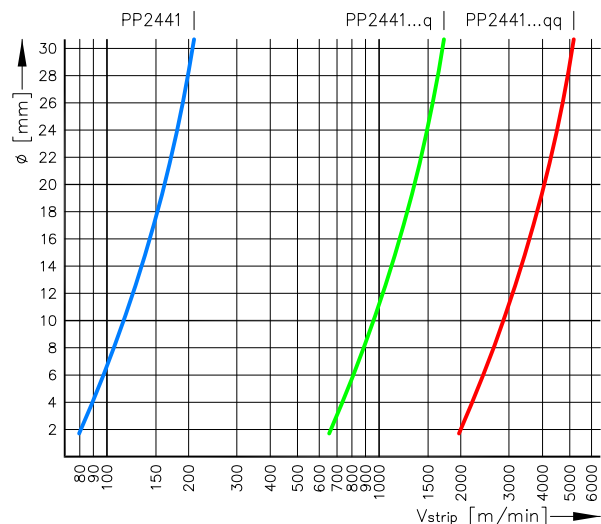
### Application:

Detection of hole-marked welded seams.

### Hints:

– Please refer the diagram to find the required device. In case of faster strip speeds please contact us.  
 – The non-transparent strip must cover the device completely. In case of smaller strips the optical side areas of the device should be masked by non-transparent masks or devices with a smaller detection range should be used.

### Diagram: Hole-size versus strip speed:



4315 DE (21.06.02 tb) (17.12.13 tb)  
 E\_4315 1 (02.08.02 tb) 24.11.17 tb  
 (20.12.89 ip) (06.12.04 m)/(tb)  
 (19.06.97 tb) (30.03.07 tb)